

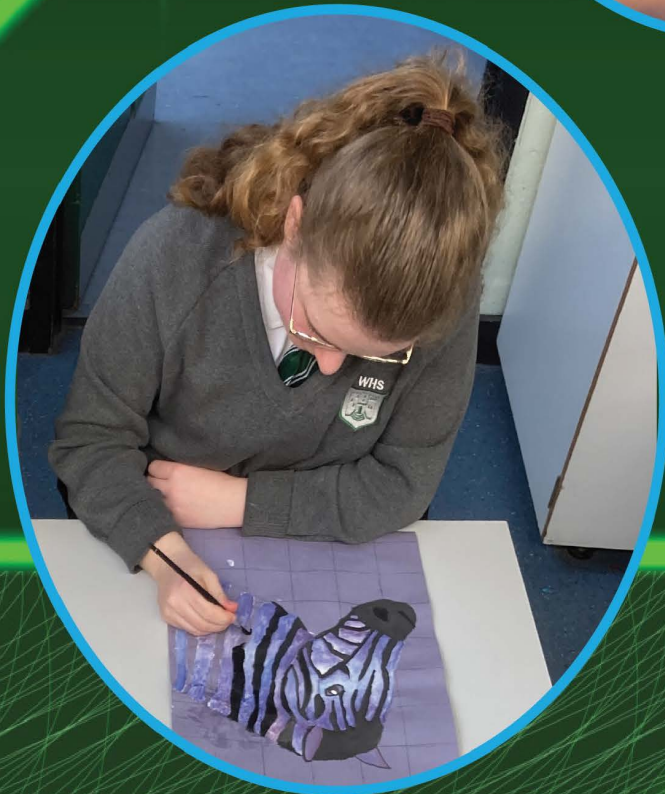


Welshpool High School
Ysgol Uwchradd Y Trallwng

2025 - 2027

Raising Achievement By Raising Expectations

Codi Cyrhaeddiad Trwy Godi Disgwyliadau



OPTION BOOKLET

Choosing the right pathway



CONTENTS



3	Introduction
4	Assessment
5	Coursework/Controlled Assessment
6	Year 10 Options Curriculum
7-8	Year 10 Subject Qualifications, Tiers & Controlled Assessment/Exam Percentages details
9-10	English Language/Literature
11-12	Maths and Numeracy
13-14	Double Award Science
15-16	Separate Science
17	Welsh Second Language
18	Welsh Baccaalaureate
19-20	Art and Design
21	Business Studies
22	Drama
23-24	Geography
25	Health and Social Care
26-27	History
28-30	Hospitality
31	Design & Technology (Engineering)
32	Design & Technology (Product Design)
33	Information Creative Technology
34-35	International Languages
36-37	Music
38-39	Physical Education
40-41	Photography
42	SWEET
43	King's Trust
44	Study Skills, Careers and Health Education



INTRODUCTION



The information contained in this booklet has been compiled in order to give parents/carers and students details of the courses of study that are available in Years 10 and 11 at Welshpool High School. The course descriptions in this option booklet reflect the changes that have occurred over recent years with GCSE and BTEC courses. A copy of the booklet has been posted on the school website at www.welshpool-hs.powys.sch.uk

We appreciate that choosing options for Year 10 can be daunting, and it's only natural to feel like this. However, as a school we are here to help and support students and parents/carers. Please ask questions and seek advice from the experienced staff in school if you are unsure about anything.

Year 10 Curriculum

The curriculum is designed to offer pupils flexibility of choice and a wide variety of subjects. Courses chosen this year will be studied over two years, with many culminating in examinations at the end of Year 11 in the summer term of 2027.

During Years 10 and 11 students are required to study a number of **Mandatory Subjects**:

English

Maths/Numeracy

Science

Welsh

The Welsh Baccalaureate (at National or Foundation level)

Physical Education

Ethical Studies

Careers

The remainder of the curriculum is made up of **Three Option Subjects**.

It is our belief that students should follow a broad and balanced curriculum. We therefore operate a system of guided choice. We encourage students to choose subjects from as many different curriculum areas as possible: modern foreign languages, humanities and creative and technical subjects.

Please be advised that courses can only run if there is sufficient uptake by students.

Students are strongly advised to seek the assistance of subject teachers, Careers Wales Adviser, form tutors and Mrs. R Aldridge, Head of Year, before completing their option forms. It is worth noting that choices made now are important not only in the next few years, but also in the years beyond 16.



ASSESSMENT



Regular assessment of work in Years 10 and 11 will take place through classwork, homework, internal school examinations and reports. Many courses have assessed elements throughout the duration of the course, often culminating in external examinations during the summer term of the second year of study.

The courses offered will be either General Certificate of Secondary Education (**GCSE**) or Business and Technology Education Council (**BTEC**) qualifications. GCSE and BTEC are both academic qualifications that are awarded in the United Kingdom.

The main difference is that BTEC is awarded for vocational subjects, and the GCSE is awarded for a large number of other subjects. Vocational subjects are those which are not purely academic but which involve learning skills useful for a particular job.

Further details of the examinations are listed on Pages 7 and 8. Specific information about each subject is given throughout the booklet.

Students will need to organise their work and their time very carefully over the next two years to ensure that they meet the many deadlines which occur throughout the course.

It is best if any coursework / controlled assessment unit commitments are cleared well before the final examination to allow maximum time for revision and preparation.

Next academic year several subjects will be delivering newly designed 'Made for Wales' GCSE specifications. Details of these can be found in the subject information pages.



COURSEWORK / CONTROLLED ASSESSMENT



Coursework/controlled assessment is an important element in many subjects. Coursework/controlled assessment is used to test the ability of the students to organise themselves, work individually and complete investigations drawing valid conclusions from information that has been researched and analysed. It has the advantage of allowing the student to gain marks through classwork, thus reducing the pressure felt by many students in examination situations.

Much of this work is now completed in class under supervision, adhering to the guidelines specified for that qualification. These exercises are referred to as controlled assessments. Students will be told by their subject teachers when these are to take place.

It is very important that students attend school when these assessments take place as the work cannot be set as homework due to examination regulations.

If students are absent at these times we will endeavour to provide opportunities for this work to be completed in school. This will inevitably mean that other lessons will be missed.

However, it will mean that the marks awarded for coursework/controlled assessment can be accessed by students who have been absent.



YEAR 9 INTO 10 OPTIONS FORM 2025-2027

Student Name: _____ Form: 9 _____

The table below shows the *PROPOSED* learning pathways for Welshpool High School from Year 9 into Years 10 and 11. The number of students choosing each subject will dictate the *FINAL* curriculum offer available to students. Throughout this process we will keep you informed of any changes to the options that are available.

Please be aware that:

- The Separate Science option in column C is for those students who are particularly able scientists and who wish to study a full 3 Science GCSE course of Biology, Physics and Chemistry.
- Students should choose subjects that they enjoy, need for the future, but will also succeed in.

Instructions for students:

- **In Year 10 you can only study one subject from each option block.** However, you are asked to indicate two subjects in each block. This will assist us in curriculum planning.
- **Put 1 next to the subject which would be your first choice in each block.**
- **Put 2 next to the subject which would be your second choice in each block.**
- Please return the completed options form to Form Tutors by **31st MARCH 2025.**

Option Block A	Option Block B	Option Block C
Geography GCSE	French GCSE	Separate Science GCSE
History GCSE	Spanish GCSE	History GCSE
Drama GCSE	Art GCSE	Geography GCSE
Health and Social Care GCSE	PE GCSE	Music GCSE
D&T Product Design GCSE	SWEET Award	Art (Photography) GCSE
D&T Engineering Design GCSE	Business BTEC	ICT BTEC
D&T Hospitality and Catering Vocational Award		King's Trust Award

Parent/Carer Signature: _____ Date: _____

**Unfortunately, subjects recruiting low numbers may be withdrawn.
A maximum of 6 classes per option block will be offered.**



QUALIFICATIONS DETAILS (CONTROLLED ASSESSMENT/EXAMINATION PERCENTAGES)

	EXAM LEVEL	COURSEWORK CONTROLLED ASSESSMENT UNITS (inc. practical/oral)	EXAM %
English	Single Award GCSE	40%	60%
	Double Award GCSE	40%	60%
Mathematics & Numeracy	GCSE Double Award		100%
Science	Separate (3 GCSEs) Double Science (2 GCSEs)	10% Practical Assessment	90%
Art & Design	GCSE	60%	40% controlled test (10 hours)
Art & Design (Photography)	GCSE	60%	40% controlled test (10 hours)
Drama	GCSE	Coursework 40% Performance 30%	30%
Geography	GCSE	40%	60%
History	GCSE	20%	80%
International Languages	GCSE		Oral 30% Reading 15% Listening 20% Writing 35%
Music	GCSE	Composing 32.5% Performing 32.5%	Appraising 35%
Physical Education	GCSE	Practical 50%	Theory 50%



QUALIFICATION DETAILS (continued)



	EXAM LEVEL	COURSEWORK/ CONTROLLED ASSESSMENT UNITS (inc practical/oral)	EXAM %
Design And Technology	GCSE Engineering Design	50%	50%
	Level 1/2 Vocational Award in Hospitality & Catering (Technical Award)	60%	40%
	GCSE Product Design	50%	50%
Welsh	2nd Language		Speaking and Listening 25% Oral 25% Reading and Writing 1 25% Reading and Writing 2 25%
Business	BTEC First Award Level 1/2	75%	25%
ICT	BTEC First Award Level 1/2	75%	25%
Health/Social Care	GCSE	60%	40%
Welsh Baccalaureate Skills Challenge Certificate	GCSE	100%	
Sweet (Personal Growth and Wellbeing)	BTEC First Award Level 1/2	100%	N/A
King's Trust	Level 1/2 Award	100%	N/A



Subject	Exam Level	Controlled Assessment units	Exam %
English language and literature	Single Award GCSE	40%	60%
	Double Award GCSE	40%	60%

English Language and Literature Double award

What will be studied (Course Structure):

GCSE English Language and Literature is a core subject and as such helps to develop a wide range of skills for your future:

- Communication Skills – expressing yourself through clear and creative use of language.
- Reading Skills – reading, listening to and researching a range of texts, analysing meaning and scrutinising reliability.
- Contextual Analysis Skills – engaging with the significance of purpose, audience, and contexts of speaking, reading and writing.
- Literacy Skills – developing and applying an understanding of grammar and uses of vocabulary.

Assessment:

This is an untiered qualification meaning that all students will sit the same assessments and can be awarded a grade between A*- G.

Unit 1 Exam: Context and meaning [15% 1hr 30 mins]

Section A: a selection of shorter reading responses and a comparative poetry essay.

Section B: extended written response from a choice of two titles (creative literary or non-fiction writing).

Unit 2 NEA: Belonging [10%]

Task A: a written essay on a selected prose text.

Task B: an individually researched presentation linked to the theme of 'belonging' and inspired by the studied prose text.

Unit 3 NEA: Influence and Power [10%]

Task A: group discussion based on texts taken from WJEC anthology.

Task B: creative non-fiction writing task, informed by the texts read for task A.

Unit 4 Exam: Motivations [20% 1hr 30 mins]

Section A: a selection of shorter reading responses and an analytical essay based on the text selected for study.

Section B: an extended response question, from a choice of two titles (creative literary writing).

Unit 5 NEA: Continuity and Change [20%]

Task A: an extended response to the study of a Shakespeare play.

Task B: a paired discussion of poetry selected from the WJEC anthology and one other poem.

Unit 6 Exam: Connections [25% 1hr 30 mins]

Section A: a selection of reading questions exploring connections between WJEC non-fiction anthology texts and an unseen text.

Section B: an extended response question, from a choice of two titles (non-fiction writing).



English Language and Literature Single award

What will be studied (Course Structure):

GCSE English Language and Literature is a core subject and as such helps to develop a wide range of skills for your future:

- Communication Skills – expressing yourself through clear and creative use of language.
- Reading Skills – reading, listening to and researching a range of texts, analysing meaning and scrutinising reliability.
- Contextual Analysis Skills – engaging with the significance of purpose, audience, and contexts of speaking, reading and writing.
- Literacy Skills – developing and applying an understanding of grammar and uses of vocabulary.

Assessment:

This is an untiered qualification meaning that all students will sit the same assessments and can be awarded a grade between A* - G.

Unit 1 Exam: Context and meaning [30% 1hr 30 mins]

Section A: a selection of shorter reading responses and a comparative poetry essay.

Section B: extended written response from a choice of two titles (creative literary or non-fiction writing).

Unit 2 NEA: Belonging [20%]

Task A: a written essay on a selected prose text.

Task B: an individually researched presentation linked to the theme of 'belonging' and inspired by the studied prose text.

Unit 3 NEA: Influence and Power [20%]

Task A: group discussion based on texts taken from WJEC anthology.

Task B: creative non-fiction writing task, informed by the texts read for task A.

Unit 4 Exam: Motivations [30% 1hr 30 mins]

Section A: a selection of shorter reading responses and an analytical essay based on the text selected for study.

Section B: an extended response question, from a choice of two titles (creative literary writing).

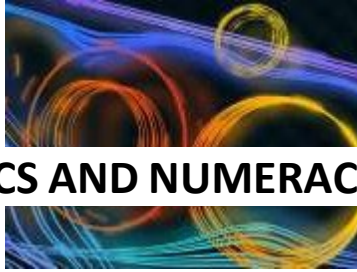
Skills required for both single and double award

- Work within a group context.
- Communicate clearly and confidently in speech and writing.
- Effectively manage own time, especially in planning, drafting and editing non-examination assessments.

Career links and progression routes:

Most post-s16 education providers require A*-C in GCSE English. The communication skills taught in this course and transferable to most careers.

Possible career paths: journalist, teacher, author, lawyer, editor, librarian and archivist, technical writer.



MATHEMATICS AND NUMERACY GCSE Level 2

What will be studied (course structure):

In Year 9 students start their GCSE course. Mathematics is a core subject taught to all, with the numbers of lessons per week increasing from four in year 9 to five in year 10 and 11.

Students are taught in sets which helps develop each student's mathematical skills and problem solving to the highest possible level for the individual.

The qualification at GCSE will take the form of a double award in Mathematics and Numeracy.

Assessment:

Students can achieve grades from A* - G, the maximum grade only being limited by the exam that they sit. There will be 2 tiers available, Higher and Foundation. Grades available for the Higher tier course will be A* to D and on the Foundation course C to G.

The GCSE exams for the Mathematics and Numeracy double award will consist of 3 papers, irrespective of the Tier.

Paper 1 – Financial Mathematics and other Applications of Numeracy

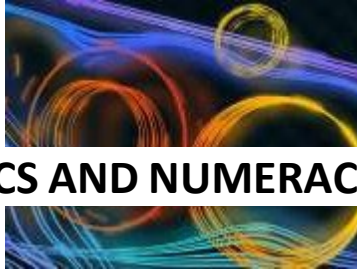
A calculator paper which will constitute 30% of the overall qualification.

Paper 2 – Non-Calculator Mathematics

A non-calculator paper which will constitute 30% of the overall qualification.

Paper 3 – Calculator Mathematics

A calculator paper which will constitute 40% of the overall qualification.



MATHEMATICS AND NUMERACY GCSE Level 2

Skills required for this course:

In our teaching we aim to encourage logical thought, to teach skills and to apply them to students' everyday life experiences and to help students enjoy mathematics in its own right.

Career links and progression routes:

Some students in Set 1 are given the opportunity to sit their Mathematics GCSE in November of Year 11 and follow the Additional Mathematics Level 2 course from January which bridges the gap between GCSE and 'A' Level.

Students who wish to study A Level Mathematics in Years 12 and 13 MUST achieve an A* or A grade in the Higher Tier Papers.

Mathematics is a 'facilitating' subject and in high demand by universities and employers in all sectors.

Additional information:

All students are expected to provide themselves with basic mathematical equipment (compasses, protractor, ruler and pencil). It is a requirement of the external examination that all students can use a calculator. The calculator should be a scientific one for all Tiers.

Any member of the department will be able to advise students on a suitable type.



DOUBLE AWARD SCIENCE GCSE Level 2

Science is part of the core National Curriculum and therefore is studied by all pupils going in to Year 10. Pupils study a GCSE Science suite of qualifications developed by the WJEC exam board which commenced in September 2016.

What will be studied (course structure):

Most pupils will follow the Double Award Science route which gains them two GCSE grades. Students study topics in Biology, Chemistry and Physics.

There are two units taught per subject which are summarised in the following table:

Year of Study	Biology	Chemistry	Physics
Year 10	Unit 1 – Cells, Organ Systems and Ecosystems	Unit 2 - Chemical Substances, Reactions and Essential Resources	Unit 3 - Electricity, Energy and Waves
Year 11	Unit 4 – Variation, Homeostasis and Disease	Unit 5 - Chemical Bonding, Application of Chemical Reactions and Organic Chemistry	Unit 6 - Forces, Space and Radioactivity

Assessment:

- The course is assessed through a series of examinations containing a mix of short answer questions, structured questions, extended writing and data response questions with some set in a practical context. A total of seven units make up the GCSE Science Double Award Qualification:
 - ◇ Units 1, 2 and 3 are assessed at the end of year 10 in written external examinations; each paper is 15% of the final award.
 - ◇ Units 4, 5 and 6 are assessed at the end of year 11 in written external examinations; each paper is 15% of the final award.
 - ◇ The final unit (Unit 7) is assessed in a practical assessment which takes place in the Spring Term of year 11; 10% of the final award.
- There are two tiers of entry available for this qualification: Higher Tier (Grades A* - D) and Foundation Tier (Grades C - G). The practical assessment is untiered.
- This qualification awards a double GCSE grade on a fifteen-point scale from A*A* - GG.

Skills required for this course:

- Team work during hands-on practical investigations.
- Thinking scientifically, applying everyday situations to science.
- Using experimental skills and strategies to analyse and evaluate.
- Using scientific vocabulary and mathematical skills.



DOUBLE AWARD SCIENCE GCSE Level 2



Career links and progression routes:

- Science provides very strong links to other subjects so the list of careers which can stem from studying science is endless: archaeology, computer science, marine biology, dentistry, meteorology, psychology, physiotherapy, engineering, geology, medicine, nursing, veterinary science..... the list goes on!
- This qualification builds on subject content which is taught at key stage 3 and provides a suitable foundation for the study of Science at either AS or A level (a minimum 'BB' grade must be obtained at GCSE level, obtained by taking a higher tier paper in the subject to be studied further).

Additional information:

- All students are expected to provide themselves with basic stationery equipment and it is a requirement of the external examination that all students require a calculator.
- There are a number of support materials for this course including textbooks, revision guides and the WJEC website. Staff will provide more advice on this throughout the course.



SEPARATE SCIENCE GCSE Level 2



Those pupils with a special interest and aptitude for science may opt to study separate GCSE's in Biology, Chemistry and Physics. This option is particularly suitable for those students who are considering doing A-Level's in the sciences and may be interested in a scientific career in the future.

What will be studied (course structure):

- The Separate Science route gains pupils three GCSE grades in Biology, Chemistry and Physics.
- As with Double award, there are two units taught per subject. All of the content present in the Biology, Chemistry and Physics units of the Science Double Award specification is covered in this qualification but there are additional topics included (*shown in italics in the following table*):

Year of Study	Biology	Chemistry	Physics
Year 10	Unit 1 – Cells, Organ Systems and Ecosystems <i>Nutrient cycles</i>	Unit 1 - Chemical Substances, Reactions and Essential Resources <i>Limestone</i>	Unit 1 - Electricity, Energy and Waves <i>Further work on waves Kinetic theory Electromagnetism</i>
Year 11	Unit 2 – Variation, Homeostasis and Micro-organisms <i>Kidneys Micro-organisms and their applications.</i>	Unit 2 - Chemical Bonding, Application of Chemical Reactions and Organic Chemistry <i>Reversible reactions, industrial processes and important chemicals.</i>	Unit 2 - Forces, Space and Radioactivity <i>Further motion concepts The Universe Nuclear decay and nuclear energy</i>

Assessment:

- The course is assessed through a series of examinations containing a mix of short answer questions, structured questions, extended writing and data response questions with some set in a practical context. A total of 3 units make up each Separate Science GCSE Qualification (9 units in total):
 - ◇ In each subject, Unit 1 is assessed at the end of year 10 in a written external examination; 45% of the final award.
 - ◇ In each subject, Unit 2 is assessed at the end of year 11 in a written external examination; 45% of the final award.
 - ◇ The final unit (Unit 3) is assessed in a practical assessment for each Science subject which takes place in the Spring Term of year 11; 10% of the final award.
- There are two tiers of entry available for this qualification: Higher Tier (Grades A* - D) and Foundation Tier (Grades C - G). The practical assessment is untiered. This qualification awards a GCSE grade in each Science subject (so 3 GCSEs in total) on an eight-point scale from A* - G.



SEPARATE SCIENCE GCSE Level 2



Skills required for this course:

- **Academic ability, based on prior assessment, will determine whether students can opt for this course.**
- Team work during hands-on practical investigations.
- Thinking scientifically and enjoying being challenged, applying everyday situations to science.
- Using experimental skills and strategies to analyse and evaluate.
- Using scientific vocabulary and mathematical skills.

Career links and progression routes:

- Many students who take Separate Science GCSEs go on to study science at A-level and university. This can lead to highly respected careers, some of which include medicine, veterinary science, dentistry, chemical engineering, pharmaceutical science, civil engineering and research.
- This qualification provides a **more suitable foundation for the study of Science at either AS or A level** than the Double Award Science Qualification (a minimum grade B is required at GCSE in the subject to be studied at A level; achieved on higher tier papers).

Additional information:

- All students are expected to provide themselves with basic stationery equipment and it is a requirement of the external examination that all students have a calculator.
- There are a number of support materials for this course including textbooks, revision guides and the WJEC website. Staff will provide more advice on this throughout the course.



WELSH SECOND LANGUAGE - GCSE FULL COURSE Level 2

What will be studied (course structure):

There are 3 themes:

- Cynefin
- Identity
- Culture

Assessment:

Unit 1	Speaking and Listening	(25%)
Unit 2	Oral - Group Task	(25%)
Unit 3	Preparation for the Future Written Exam 1hr 30 mins	(25%)
Unit 4	Literature and Creative Writing Written Exam 1hr 30 mins	(25%)

Skills required for this course:

This is a new course with more emphasis on developing listening and oral skills which will enable learners to be more fluent and confident when speaking Welsh in and outside the classroom.

Career links and progression routes

Welsh is now a compulsory subject for all students going into Year 10 as it is a growing and dynamic language. It is increasingly required by employers in jobs throughout Wales. It is spoken by an increasing number of young people and it offers a whole range of social opportunities. The trend is set to continue as the Welsh Language Act passed by Parliament in 1993 ensures that more and more services are available in both Welsh and English.

Many school leavers, either straight away or after a college course, are likely to find themselves applying for jobs in council or government departments or agencies. The opportunities are varied – you could find yourself in an office, a hospital, a school, a leisure centre or the police or fire service. They all now offer their services in both Welsh and English – face to face, over the phone and in forms and other literature. This means that there will always be a need for people who can work in both languages.

Many bodies now offer special Welsh courses for their staff but you will have something extra to offer if you already have a Welsh Language qualification – even if you are not fluent. Let's face it – it will be much more difficult to learn Welsh after you have left school. Since 1987 the number of adults who have suddenly realised that they need to be able to speak Welsh has increased every year.

Thirteen thousand adults attend classes every year and nearly 200,000 watch S4C programmes for Welsh learners and follow home study courses. Many wish they'd learnt Welsh at school. This course gives you the opportunity to achieve this. Pob lwc!



WELSH BACCALAUREATE GCSE (SKILLS CHALLENGE CERTIFICATE) Level 1/2

What will be studied (course structure):

Two Challenges and a Project:

- Enterprise & Employability
- Community
- Individual Project

Assessment:

- There are no examinations
- 100% assessment (internal)
 - ◇ Enterprise & Employability (25%)
 - ◇ Community (25%)
 - ◇ Individual Project (50%)

The Enterprise and Community challenges are currently studied in Year 10 and the Individual Project is studied in Year 11.

Skills required for this course:

- The 2 challenges (Enterprise & Employability & Community) are group challenges
- The Individual Project is an individual component
- The skills that are developed are:
 - ◇ Numeracy
 - ◇ Literacy
 - ◇ Digital Literacy
 - ◇ Personal Effectiveness
 - ◇ Critical Thinking & Problem Solving
 - ◇ Planning & Organisation
 - ◇ Creativity & Innovation

Career links and progression routes:

- The skills developed through the Skills Certificate Challenge are universal in their application to whatever the next steps after Year 11. Sixth Forms, Colleges, Universities and Employers will all want pupils that have developed the skills mentioned.



ART & DESIGN GCSE Course Level 2

What will be studied (course structure):

This is a two-year course which consists of the following areas of study:

- Drawing and Painting
- Printmaking
- Contextual Studies
- Collage and Mixed Media
- Unit 1 – Identity
- Unit 2 – Self Generated Exam

Assessment:

Certification will take one form:

Art and Design in which the work submitted will be selected from a broad area of study (of at least two of the above).

A candidate successful in the unendorsed examination will have 'Art and Design' on the certificate. The selection of areas of the syllabus for study will depend on the resources of time, equipment and expertise within the department and on the ability, aptitude and career aspirations of the student. The work is marked internally and moderated externally. Assessment is divided between coursework (60%) and a controlled test of up to 10 hours (40%).

Coursework will consist of 1 unit, total marks 60%. These units follow WJEC guidelines and will follow a specified theme showing candidates' interest, ability and an understanding of contextual references. Alternatively, students may work on one theme but produce two separate final outcomes.

Units can be a collection of related pieces providing evidence of a broad course study.

A sketchbook is mandatory to support the unit. Students will work throughout the two-year course on skills and techniques to produce a coursework portfolio to a high standard of presentation.

The controlled exam will take place in March/April of the examination year. Candidates will have up to 11 weeks to prepare; this is determined by the centre. The total time allowed for the completion of the exam will be up to 10 hours. Candidates will attempt one test only.



ART & DESIGN GCSE Course Level 2

Skills required for this course:

Candidates will be required to complete homework that will be set as longer tasks requiring a practical element, or short tasks requiring research. Students will be required to write about artists and evaluate and analyse their work. Students must keep a comprehensive sketchbook detailing their research and ideas. Homework is set regularly throughout the course.

Students will require access to a computer and photography is required for homework on a regular basis. Students are expected to make regular visits to galleries and museums independently and gain a wider understanding of art history and culture.

Students need to be self-motivated, independent learners and be prepared to have a go. Art is time consuming but equally rewarding.

Students must be hands on, have an eye for detail and be prepared to explore ideas, concepts and using materials creatively.

Career links and progression routes:

The course leads onto the opportunity to study Art and Design at AS and A level, BTEC level 3 or diploma and subsequent degree courses at college. Careers can progress into some of the following: Architecture, Creative writing, art history, curating, museum, library, art gallery historians, analytics, journalism, fashion, textiles, spatial design, 3D product design, packaging design, interior design, photography, digital media, animation, graphic design, fine art, sculpture, arranging, displaying, floristry, hair and beauty, marketing, teaching and lecturing, advertising, typography.

Additional information:

Extra-curricular sessions are available at lunch and after school.



BUSINESS STUDIES

BTEC Level 1/2 First Award (1 GCSE EQUIVALENT COURSE)

What will be studied (course structure):

Unit 1 – Introduction to Business

This unit introduces you to the language and terminology used in business. You will explore different types of business ownership and how they relate to the size and scale of a business. You will also explore how the type of ownership impacts on the responsibilities of the owners of a business.

Unit 2 – Finance for Business – External

In this unit, you will explore the types of costs that businesses incur, from the initial start-up costs involved in setting up a business to the ongoing daily costs of running the business. You will then explore the ways in which the sale of products and services generates revenue and learn about profit.

Unit 3 – Enterprise in the Business World – Internal

This unit introduces you to the language and terminology used in business. It explores what businesses do, trends that affect them, how they operate and the factors that influence their success.

Unit 4 – Promoting a Brand – Internal

In this unit, you will find out what it takes to build a brand and what a business has to consider when planning brand development. You will investigate the importance of branding to a business, the types of branding that are available and why businesses need to review and update their brands.

Assessment:

- 75% of the course is coursework based
- 25% of the course is exam based

Skills required for this course:

Research skills, the ability to manage time effectively, good computer skills, organisation skills, good attendance, good project management skills.

Career links and progression routes:

The BTEC Business Studies qualification will give you the opportunity to enter employment in the Business sector. This course is also a good foundation for Level 3 Business and then further progression to higher education. Typical careers include employment in a range of different jobs within a range of different businesses including business administration, marketing, business development, business ownership and accountancy.

Additional information:

You do not have to have prior experience of studying Business, however you should be interested in local and national business within the UK and Wales. You will enjoy this Business Studies course if you are interested in how businesses work, aspire to work within the business environment or have an interest in owning your own business.



DRAMA GCSE Level 2

What will be studied (course structure):

Unit 1

Devising Theatre: Learners will create a performance in the style of a chosen practitioner. This will be accompanied by coursework on their process and research. This is concluded with a written evaluation in exam conditions.

Unit 2

Performing Theatre: Learners will be assessed on a scripted performance.

Unit 3-

Interpreting Theatre: This digital exam will be separated into two sections.

Section A will be on the play 'FACE'.

Section B will be based on live theatre; therefore, the learners will attend at least one live theatre show during the course.

Assessment:

- Unit 1 - 40% (performance and Coursework)
- Unit 2- 30% (performance)
- Unit 3- 30% (digital exam)

Skills required for this course:

- Working as a team
- Confidence
- Willingness to perform
- Independent working

Career links and progression routes:

- Acting
- Teaching
- Theatre Technician
- Multiple roles with the TV, Theatre and Film industry
- Any position which requires communication and public speaking

Additional information:

This course is an exciting opportunity for learners who prefer a practical working environment. This course enables you to build in confidence whilst working productively in teams. You will have the ability to work creatively exploring various plays, playwrights and practitioners.



Why choose GCSE geography?

Geography is the study of places and the relationships between people and their environments. Geographers explore the physical properties of the earth's surface and the human societies spread across it.

What can be more important for our future?

What will I study?

TITLE/UNIT 1- Our Physical and Human World.

Here you will study:

- Drainage basin and rivers.
- Changing coastlines
- Migration
- Settlement Change

TITLE/UNIT 3 - Our Dynamic and Diverse World.

- The geography of inequality
- The highs and lows of our weather
- Wild weather
- Continual climate change.
- Managing global challenges.

What skills will I develop?

- Geography is always in the news. You will develop skills to interpret, analyse and evaluate information to make decisions about issues and problems that affect people and the environment.
- An ability to collect, process, analyse and understand qualitative and quantitative data and communicate it to a variety of audiences.
- Develop a reasoned argument and communicate it to a variety of audiences.
- Teamwork and leadership skills.
- Studying geography allows you to develop a range of personal skills for life, including time management, dealing with uncertainty, flexibility, creativity, problem solving and self-confidence.



How will I be assessed?

EXAM 1 - Unit 1 Our Physical and Human World.

This is worth 30% of the qualification and is a written exam 1 hour 30 mins.

EXAM 2 - Unit 3 Our dynamic and Diverse World.

This is worth 30% of the qualification and is a written exam 1 hour 30 mins.

Non-Examination Assessments (NEA) - There are 2 NEA tasks:

Unit 2 Developing Fieldwork Skills 25% of the qualification.

You will carry out a field work visit based on a topic such as, change over time or environment, and investigate this in a chosen location, writing a fieldwork enquiry that will be submitted to WJEC.

Unit 4 Sustainable Solutions, 15% of the qualification

You will receive a resource booklet on a geographical issue and will also carry out background reading on the issue. You will then write a report based on a real-world issue in a decision-making task, reporting how sustainable the various options are likely to be.

Careers in geography

The transferable skills developed by studying geography are actively sought by employers. There is a wealth of jobs that geographers can do spanning almost every sector! Most jobs have an element of geography in them, whether a doctor investigating the spread of disease or an engineer designing products to cope with less demand for plastic.

"The study of geography is about more than just memorizing places on a map. It's about understanding the complexity of our world, appreciating the diversity of cultures that exists across continents. And in the end, it's about using all that knowledge to help bridge divides and bring people together." **Barak Obama.**



HEALTH AND SOCIAL CARE GCSE Level 2



What will be studied (course structure):

Unit 1: Human Growth, Development and well-being – External Written Exam 1hr 30mins

In this unit you will gain knowledge and understanding of human development across the life cycle and the ways in which this may be affected; how individuals can take control of their care and health and well-being; and how early intervention and prevention can support growth and development of individuals.

You will develop your knowledge and understanding of the four areas of content:

- Human development across the life cycle
- Physical, social, emotional and intellectual health
- The importance of active participation on development and well-being
- Early intervention and prevention to promote and support growth, development and well-being for a range of conditions and circumstances

Unit 2: Promoting and maintaining health and well-being – Internal Assessment

In this unit you will gain knowledge and understanding of the range of health and social care, and childcare services provided in Wales and how these services promote and maintain the health and well-being of the nation.

You will develop your knowledge and understanding of the three areas of content:

- Health and social care, and childcare provision in Wales to promote and support health and well-being
- Public health and health promotion across the life cycle
- Factors affecting health and well-being across the life cycle

Task 1: Service Provision (approximately 10 hours) - 40% of the marks within this unit are allocated to a service provision investigation which will assess your knowledge, understanding and skills in relation to health and social care.

Task 2: Health Promotion (approximately 15 hours) - 60% of the marks within this unit are allocated to a service provision investigation which will assess your knowledge, understanding and skills in relation to promoting and maintaining health and well-being.

Assessment:

60% of the course is coursework based, 40% of the course is exam based.

Skills required for this course: Research skills, managing time effectively, computer skills, organisation skills, good attendance.

Career links and progression routes: The GCSE Health and Social Care qualification will give you the opportunity to enter employment in the care sector. This course is also a good foundation for A Level Health and Social Care or other Level 3 Health and Social Care qualifications, then further progression to higher education. Typical careers include employment in a range of different jobs in health care, medical care, teaching and childcare

Additional information: You do not need to have any prior experience in Health and Social Care; however, you should be interested in healthcare and people. You will enjoy this Health and Social Care course if you want to know more about how people grow and develop.



HISTORY GCSE Level 2

What will be studied (course structure):

- Unit 1: Depression, War and Recovery, Britain 1930-1951
- Unit 2: The USA: A Nation of Contrasts, 1910-1929
- Unit 3: Changes in Crime and Punishment in Britain, c1500 to the present day
- Non-Examination Assessment (NEA) – 2 source evaluation tasks on British History – WWII. This academic year, pupils will focus on Hitler & Nazi Germany

Assessment:

- The course that we offer is made up of both examinations and controlled assessment (NEA). 80% of the course is exam based and 20% is made up of controlled assessment (NEA).
- Unit 1 & 2 examinations will be sat at the end of Year 10. Both exams are 1 hour. This makes up 50% of the course.
- The Unit 3 examination will be sat at the end of Year 11. The exam is 1 hour 15 mins and makes up 30% of the course.
- NEA is completed in Year 11 and makes up 20% of the course.

Skills required for this course:

The GCSE course builds on skills taught in KS3. Students will be required to:

- Judge and evaluate the reliability of evidence & historical interpretations
- Analyse the usefulness of sources
- Prioritise & debate ideas
- Make and support an argument
- Show good historical knowledge

Career links and progression routes:

Taking GCSE History is a smart move. It can be used in an incredibly wide range of careers including:

- Law
- Travel
- Management
- Journalism
- Publishing
- Education



HISTORY GCSE Level 2

Additional information:

Why study GCSE History?

- History is a highly respected academic subject.
- It is listed by the Russell Group Universities as a 'Facilitating Subject' at A level. This means that it is one of the three non-core subjects (History, Geography, MFL) that is listed as being most commonly required by the top Universities to do degrees.
- To do A Level History it is preferable to do GCSE History.
- Success in History shows that you have high level thinking skills, can identify and debate with different interpretations and can analyse sources and come to balanced conclusions – all skills valued by employers.
- History helps you understand your place in the world today.
- History GCSE includes interesting stories about the past. If you love a good story, you will enjoy History GCSE.
- Excellent results.



Level 1/2 VOCATIONAL AWARD HOSPITALITY & CATERING (TECHNICAL AWARD)

This exciting course being offered combines practical cooking activities with knowledge about nutrition, cooking methods, dietary needs, menu planning and the Hospitality industry. It is ideal for any pupil who wishes to pursue a career in Hospitality and Catering or who has a keen interest in the subject and enjoys cooking. Skills learnt here are transferable to other subjects and situations.

The Level 1/2 Vocational Award Hospitality and Catering (Technical Award) has been designed to support learners in schools and colleges who want to learn about this vocational sector and the potential it can offer them for their careers or further study.

Unit 1 enables learners to gain and develop comprehensive knowledge and understanding of the hospitality and catering industry including provision, health and safety, and food safety.

Unit 2 enables learners to develop and apply knowledge and understanding of the importance of nutrition and how to plan nutritious menus. They will learn the skills needed to prepare, cook and present dishes. They will also learn how to review their work effectively.

Structure

The WJEC Level 1/2 Vocational Award in Hospitality and Catering is made up of two mandatory units:

- **Unit 1** The Hospitality and Catering Industry
- **Unit 2** Hospitality and Catering in Action

Learners must complete and pass both units.

Pupils will be expected to bring ingredients most weeks and wear chef whites for practicals.



Level 1/2 VOCATIONAL AWARD HOSPITALITY & CATERING (TECHNICAL AWARD)

Skills

- Skills required for independent learning and development
- A range of generic and transferable skills
- The ability to solve problems
- The skills of project-based research, development and presentation
- The fundamental ability to work alongside other professionals, in a professional Environment

Progression and Career Links

Learners completing the Level 1/2 Award in Hospitality and Catering may be interested in progressing to Level 3 qualifications in Food Science and Nutrition.

Through the two units, learners will gain an overview of the hospitality and catering industry and the type of job roles that may be available to assist them in making choices about progression. Successful completion of this qualification could support entry to qualifications that develop specific skills for work in hospitality and catering such as:

- Level 1 Certificate in Introduction to Professional Food and Beverage Service Skills
- Level 2 Certificate in Professional Food and Beverage Service Skills
- Level or Level 2 NVQ Diploma in Professional Cookery



Level 1/2 VOCATIONAL AWARD HOSPITALITY & CATERING (TECHNICAL AWARD)

Unit 1 and 2

Summary of Assessment:	
Unit 1: The hospitality and catering industry Written examination: 1 hour 20 minutes 40% of qualification	80 marks
Questions requiring short and extended answers, based around applied situations. Learners will be required to use stimulus material to respond to questions.	
Unit 2: Hospitality and catering in action Controlled assessment: approximately 12 hours 60% of <u>qualification</u>	120 marks
An assignment brief will be provided by WJEC which will include a scenario and several tasks available via the WJEC Secure Website.	

Grading:

Level 1 Pass, Level 1 Merit, Level 1 Distinction, Level 1 Distinction*, Level 2 Pass, Level 2 Merit, Level 2 Distinction, Level 2 Distinction*.



DESIGN & TECHNOLOGY GCSE ENGINEERING Level 2

What will be studied (course structure):

Students will learn about modern manufacturing technologies and the impact these will have on society in the future. They will study the work of a number of important designers and engineers. In the Engineering Design option, the students will learn about materials and components used in electronic, electrical and mechanical engineering and how these can be combined to produce complex control systems. Computer Aided Design and Manufacture will be a significant part of the course.

Assessment:

The course consists of a written examination (50%) and coursework (50%). The coursework will be a design and make task where the candidate develops a product to meet the requirements of a brief outlined by the examination board. The design and make task will be completed in school during Year 11.

Grading is A*- G GCSE

Skills required for this course:

Learners will develop knowledge and understanding by applying their learning and skills in a project related context. Additionally, it is popular and effective because it engages learners to take responsibility for their own learning and to develop skills that are essential for the modern-day workplace. These skills include: working from a prescribed brief; working to deadlines; presenting information effectively and accurately completing administrative tasks and processes.

Career links and progression routes:

- GCSE Design and Technology Engineering Design option will be of particular interest to students wishing to follow a career in any aspect of engineering or design. It is an excellent preparation for studying Design and Technology at AS/A level. Many past students who have followed this course have gone on to study Engineering or Sciences at university.
- Some have followed the apprenticeship route into engineering. As the course title suggests, it is a design course.

Additional information:

The course builds on basic skills covered in KS3 Design and Technology; however there is a lot of new specialised information. This means that students will be expected to show creativity and innovation in their work. In addition to computer design work, traditional drawing and sketching will be required. The course includes lots of new theory and is not just a making course.



DESIGN & TECHNOLOGY GCSE PRODUCT DESIGN Level 2

What will be studied (course structure):

- The course consists of written examination 50% External paper based and internal controlled assessment (coursework) 50%, which consists of research, analysis, CAD evaluation. The making makes up about 15% of the qualification.
- Possible visits or guest speakers from the industry.

Assessment:

The GCSE is assessed through a combination of written examination paper based, sat at the end of Year 11. The coursework (non-examined assessment) will be a design and make task where the pupils develop a product to meet the requirements of a context outlined by the examination board. The design and make task will be completed in school during Year 11 only, with Year 10 primarily focusing on theory content in preparation for the exam.

Grading is A*-G GCSE

Skills required for this course:

- Pupils develop knowledge and understanding by applying their learning and skills in a project related context. Additionally, it is popular and effective because it engages learners to take responsibility for their own learning and to develop skills that are essential for the modern-day workplace. These skills include: working from a prescribed brief; working to deadlines; presenting information effectively and accurately completing administrative tasks and processes.

Career links and progression routes:

- GCSE Design and Technology Product Design option will be of particular interest to students wishing to follow a career in any aspect of engineering or design. It is an excellent preparation for studying Design and Technology at AS/A level.
- Possible careers: Product designer, Graphic designer, Architect, Furniture designer.

Additional information:

- The course builds on basic skills covered in KS3 Design and Technology; however there is a lot of new specialised information and theory content. This means that Pupils will be expected to show a willingness to learn, creativity and innovation in their work. In addition to computer design work (CAD), traditional drawing and sketching will be required. There is a lot of new theory and is not just a making course.
- Pupils will learn about modern manufacturing technologies and the impact these will have on society in the future. They will study the work of a number of important designers and engineers. In the Product Design option differs from GCSE Engineering as the focus is materials both traditional and modern, and how they are applied and used in everyday products, rather than electronics and systems.



INFORMATION & CREATIVE TECHNOLOGY

BTEC Level 1/2 First Award (1 GCSE EQUIVALENT COURSE)

What will be studied (course structure):

Unit 1 - The Online World – External

How do websites work? How do emails reach your computer? How does the use of computer applications affect your daily life? This unit provides an introduction to the modern online world.

Unit 3 – A Digital Portfolio – Internal

This unit is your chance to show off! A digital portfolio is an exciting onscreen way to showcase your achievements to potential employers or when applying for a course. It is all about the projects you have created and developed, your use of communication and presentation skills, and your capabilities and potential.

Unit 4 – Creating Digital Animation – Internal

How are the amazing visual effects in science fiction, fantasy films and computer games made? This unit provides you with an introduction to tools/techniques and processes that are used commercially when creating computer animation.

Unit 6 – Creating Digital Graphics – Internal

You will see graphics at work whenever you surf websites, play computer games, go shopping or read a user manual. Graphics are used to communicate messages in every part of our lives, such as advertising, music, fashion, interior design and architecture. It is the job of a graphic designer to create digital graphics that bring colour, information and interest to our lives for a wide range of industries.

Assessment:

- 75% of the course is coursework based
- 25% of the course is exam based

Skills required for this course:

Research skills, effective time management skills, excellent computer skills, design skills, organisation skills, good attendance.

Career links and progression routes:

The BTEC ICT qualification will give you the opportunity to enter employment in the ICT and computer sector. This course is also a good foundation for Level 3 ICT and then further progression to higher education including computing courses. Typical careers include employment in a range of computing jobs whether in computer support roles or in specialist roles such as computer programming, mobile app development and computer games development.

Additional information:

You do not have to have studied ICT in Year 9 to do this course as the course does not specifically focus on elements covered in Key Stage 3. You will like this course if you like designing and creating. You must also like using a computer and be able to use a computer independently.



FRENCH/SPANISH GCSE Level 2



What will be studied (course structure):

The new International Languages GCSE is underpinned by the curriculum for Wales framework and has been designed to ensure learners can continue to make progress towards the four purposes whilst studying this qualification.

The context for learning the language is organised under **three broad themes**:

- Language for Leisure and Wellbeing
- Language for Travel
- Language for Study and Work

ASSESSMENT

Unit 1: Oracy

NEA

30% of qualification 60 marks

Three tasks: Read aloud sentence, Roleplay, 1 min presentation followed by a discussion.

Unit 2: Reading & Writing

NEA

15% of qualification 45 marks

A written response about a short/graphic novel or film script, studied in class (Max 200 words).

Unit 3: Listening

Written examination: Foundation/Higher tier

20% of qualification 45 marks

Listening tasks.

Unit 4: Reading & Writing

Written examination:

35% of qualification 70 marks

- Reading comprehension tasks, in English, on French/Spanish texts.
- Translation task, into English.
- Written response, from a choice of 3 questions (Max 120 words).



FRENCH/SPANISH GCSE Level 2



Skills required for this course:

- Listening, speaking reading and writing skills.
- Time management.

Career links and progression routes:

- The course provides a suitable foundation for the study of French/Spanish at A level, which in turn can lead to studying languages at university.
- Studying a language adds an extra dimension to your personal skills profile which will impress anyone who reads your CV and puts you in a stronger position to get a job in companies with international links, or to study and/or work abroad.
- Potential career paths: Law, the armed forces, education, travel and tourism, hospitality and catering, journalism, engineering, business and commerce, medicine, translation, interpreting, media.

Additional information:

- French is spoken by over 220 million people in all five continents and France itself has become one of the most powerful countries in the world. Its history is closely related to Great Britain, and its culture (fashion, food and wines) can be found in most British towns. France is the most visited country in the world. As the closest foreign country to the UK, it is not surprisingly the most popular holiday destination for Britons.
- There are more than 400 million native speakers of Spanish. It is the official language of most of Central and South America and is also spoken in places as far away as The Philippines and Equatorial Guinea in Africa. Spanish is the third most spoken language globally and is the second most used language on the internet. Spanish-speaking countries make up a vast Hispanic global economy so Spanish speakers are highly sought after by employers. The influence of Spanish music, food and culture is everywhere – you don't have to look far to find it.
- Both GCSE courses build on Language acquired in KS3, however if you are genuinely interested in studying Spanish GCSE but have not studied it previously, then please see Miss O'Sullivan to discuss this further.
- As part of its Global futures plan the Welsh Government wants learners to become '**Bilingual plus 1**' i.e. proficient in English, Welsh and at least one Modern Foreign Language.
- The Russell Group of leading UK universities states that Modern Foreign Languages are Facilitating Subjects, improving your chances of getting into one of their universities.
- The study of a Modern Foreign Language will broaden horizons, develop cultural knowledge and understanding and foster transferable skills such as confidence, communication, problem solving and creativity.
- Whether it is for your future career prospects or simply for pleasure, studying French and/or Spanish at GCSE will give you a head start later on in life.



MUSIC – GCSE Level 2

What will be studied (course structure):

During the GCSE Music course you will learn about music from different times and places through a series of performing, composing and listening activities. Your involvement in these activities will deepen your understanding and awareness of the many different styles of music that are performed and listened to: from Baroque and Classical to Film Music and Popular Music!

All learning activities will be centred both on developing pupils' general performing and composing skills and developing an understanding of how the elements of music are used in a range of music from contrasting style and genres and periods and contexts.

Assessment:

At the end of Year 11 you will be assessed on the three skill areas detailed below.

Unit 1: Performing (32.5%)

- 4-6 minutes worth of music.

You will perform a minimum of two pieces, which can be a solo or ensemble or combination of both.

Unit 2: Composing (32.5%)

- 3-6 minutes worth of music.
- 2 compositions.
- A Reflective Log.

You will compose two compositions, one of which must be in response to a brief set by WJEC in Year 11. The second composition is a free composition which allows you to choose any style of music to write for.

Unit 3: Appraising (35%)

This unit is assessed through a digital listening examination at the end of Year 11. There are eight questions in total, two of which will focus on two set works with the remainder assessing learner's ability to describe how the elements of music have been used in a variety of extracts of music.



MUSIC – GCSE Level 2

Skills required for this course:

- The ability to work as a team, manage your time effectively and, above all, a general enthusiasm for creating and performing music and a willingness to learn about new areas and styles.
- **Please note: It is not essential to play an instrument or read music to take this course.**

Career links and progression routes:

- Studying Music at GCSE can lead to a wide range of career opportunities: from choosing a career in education, in the forces or in music therapy to working in one of the many areas open to you in the recording industry and the media.
- Whether planning a career in music or not, Music can also help you when considering sixth form and university: the analytical skills gained in addition to those of communication and creativity is useful for all career paths, and Music is often considered as an additional subject to add variety to choices. At university level, Music is often a preferred subject due to its traditional background and the dedication and diversity of skill it shows.

Additional information:

- Music GCSE builds on the knowledge and skills gained at KS3 through the way in which it adds depth to pupils' understanding. It continues to stretch their practical skills of performing and composing and ensures it is centred on practical music making. However, in doing so, it also provides pupils with the opportunity to develop a deeper understanding of the impact certain styles and structures made on time and place.
- Music is an excellent GCSE to choose if you are looking for a subject that contains a good balance of creative practical work and in-depth written work whilst also developing your wider social skills of confidence, communication & leadership.



GCSE PHYSICAL EDUCATION Level 2

What will be studied (course structure):

GCSE Physical Education is a course intended for students with an interest in sport and physical education. It will enable learners to engage in a practical course, designed to encourage learners to be inspired, motivated and challenged by the subject.

Practical

Learners will have the chance to select and experience a combination of activities from the following:

- Team activities e.g. football, hockey, rugby, netball, rounders and basketball
- Individual activities e.g. badminton, tennis, athletics, lifesaving and swimming
- Opportunities to engage in off-site activities e.g. golf, horse-riding, skiing, judo, mountain biking etc.

As part of the practical, learners are required to design a personal fitness programme which will help to improve fitness and performance in one of their practical activities.

Theory

Most of the theoretical elements of the course will be integrated into the practical lessons, however there will be time spent in the classroom. The subject content focuses on five key areas:

- Health, training and exercise
- Exercise physiology
- Movement analysis
- Psychology of sport and physical activity
- Socio-cultural issues in sport and physical activity.

Assessment:

Practical 50%

The practical element will be school-based, administered and assessed by the teacher with the learners' work moderated externally by the exam board. Learners will be assessed in three different activities, at least one individual sport, one team sport and one other.

One activity will be a major activity which will have a personal fitness programme linked to the activity. The major activity will be worth 22% of the overall grade, with the two minor activities being worth 14% each.

Theory 50%

Assessment will comprise of one written exam of 2 hours duration.



GCSE PHYSICAL EDUCATION Level 2

Skills required for this course:

- A keen interest and enjoyment of sport is essential
- A reasonable level of fitness and practical ability, however this can be developed over the course
- Preferably attend a sports club either in school or at a club outside of school
- Ability to work as part of a team and independently
- Energy, enthusiasm and willingness to learn

Career links and progression routes:

- Sports science
- PE teacher
- Physiotherapist
- Sports coach/consultant
- Sports development
- Personal trainer
- Nutritionist
- Physical therapist
- Chiropractor

Additional information:

GCSE PE will draw on and enhance knowledge from KS3 and increase understanding of the factors that affect performance and participation in physical education.

Through studying GCSE PE you will gain many valuable skills that will help you in other GCSE and A level subjects as well as your future career. Some of the skills that you will develop include:

- Communication skills – working as a team, problem solving, developing clear communication skills that will help you in the workplace. Every employer looks for candidates who are able to communicate well verbally and in writing.
- Social skills – PE is a very social subject, it can build your confidence and you will learn how to socialise with people in an effective way.
- Analysis and evaluation – PE involves analysing your own and others' performance while looking for ways it could be improved.
- Given opportunity to experience different roles e.g. officiating, coaching, performer, help organise big events like the world marathon challenge.



PHOTOGRAPHY GCSE Level 2

What will be studied (course structure):

This is a two year course which consists of the following areas of study:

- Documentation photography
- Photo-journalism
- Studio photography
- Location photography
- Experimental imagery
- Installation
- Unit 1 – Identity
- Unit 2 – Self Generated Exam

Certification will take one form:

Photography (endorsed) in which the work submitted will be selected from various areas of study.

A candidate successful in the endorsed examination will have 'Art & Design (Photography)' on their certificate.

Assessment:

The work is marked internally and moderated externally. Assessment is divided between coursework (60%) and a controlled test of up to 10 hours (40%).

Coursework will consist of 1 unit, total marks 60%. These units follow WJEC guidelines and will follow a specified theme showing candidates' interest, ability and an understanding of contextual references. Alternatively, students may work on one theme but produce two separate final outcomes.

Units can be a collection of related pieces providing evidence of a broad course study. A sketchbook is mandatory to support the unit. Students will work throughout the two-year course on skills and techniques to produce a coursework portfolio to a high standard of presentation.

The controlled exam will take place in March/April of the examination year. Candidates will have up to 10 weeks to prepare; this is determined by the centre. The total time allowed for the completion of the exam will be up to 10 hours. Candidates will attempt one test only.



PHOTOGRAPHY GCSE Level 2



Skills required for this course:

Homework and individual work: Students will be required to complete homework that will be set as longer tasks requiring a practical element or short tasks requiring research. Students will be required to write about and evaluate their work and the work of other photographers. Students must keep a comprehensive sketch/notebook detailing their research and ideas. Homework is set regularly throughout the course. Students will require access to a computer and photography is required for homework on a regular basis.

Career links and progression routes:

The course leads onto the opportunity to study photography at AS and A level, BTEC level 3 or diploma and subsequent degree courses at college.

It can lead into career paths in marketing, fashion, jewellery, journalism, photo-journalism, graphics, CAD, digital media, game design and animation.



(SWEET) PERSONAL AND GROWTH WELLBEING

BTEC Level 1 and 2

What will be studied (course structure):

Sweet is a personal and growth development course delivered in secondary schools and other educational establishments. The Sweet programme is a nationally recognised qualification awarded by Edexcel.

The course combines key themes from the PSE Curriculum, with Learners studying the following:

- Physical Health and Wellbeing
- Emotional Wellbeing
- Social Health and Wellbeing
- Sexual Health and Wellbeing
- Personal Identity
- Environmental Awareness
- Financial Awareness
- Personal Progress

Assessment:

SWEET is a fully accredited qualification and nationally recognised, with no examination. Assessment is 100% coursework based. Grading for SWEET is Pass, Merit, Distinction and Distinction* (equivalent to GCSE A*-G).

Skills required for this course:

- Learners gain valuable skills in wellbeing, confidence and resilience
- Development of life and employability skills
- Learners need to be organised and manage their time well

Career links and progression routes:

SWEET develops many of the discreet skills required by employers across all sectors, e.g. managing money effectively and working as part of a team.



KING'S TRUST AWARD LEVEL 1/2

The ACHIEVE PROGRAMME supports pupils to develop key life skills, build their confidence and improve their overall attitude to learning.

Young people will have the opportunity to work towards the King's Trust's recognised *Personal Development and Employability Skills Qualification (PDE)*.

Course Structure:

The PDE has a wide range of units which are in line with the new Curriculum for Wales.

These units allow for flexibility, choice and pathways to progression and include:

Preparing for and experiencing the World of Work

- | | | |
|-----------------------|--------------------------|----------------------|
| • Career Planning | • Teamwork | • Sustainability |
| • Community Impact | • Personal Development | • Wellbeing |
| • Customer Experience | • Presentation Skills | • Money Matters |
| • Digital Skills | • Project-based Learning | • Enterprise Project |

Assessment

Tasks for each assessment are collected as a portfolio of evidence. Assessment is 100% coursework and is awarded at Entry Level 3, Level 1 or Level 2.

The qualification is available in 4 different sizes.

- Award
- Certificate
- Extended Certificate
- Diploma

There is also an opportunity to take part in enrichment activities funded by the King's Trust which could include inspirational speakers, outdoor activities and STEM activities (Funding dependent).

Skills required for this course:

- ability to get involved in the decision-making process relating to module choice and content
- enthusiasm to look for opportunities to develop understanding outside the classroom
- determination to work as a team, build resilience, manage time and improve personal well being

Employability:

The King's Trust qualification in Personal Development and Employability Skills (PDE) recognises a breadth of personal skills, qualities and attitudes required by employers across a range of sectors.



STUDY SKILLS AND STUDENT/TUTOR REVIEWS

Every student in Years 10 and 11 participates in an Academic Monitoring Programme.

This is designed to inform students of their current performance and their future potential. This system has been developed over a number of years and has been seen to work in two ways:

- Students' levels of aspiration and commitment to work have improved
- Final results have improved.

As part of this programme students meet with their tutor to discuss their academic progress. In some instances, students may also be assigned a staff mentor, often a member of the Senior Leadership Team (SLT).

Careers

All students will undertake a module on Careers. This module will be centred on the following topics:

- Work Experience preparation
- A period of work experience
- Careers interviews
- Introduction to the Careers Suite
- Meetings with the Careers Officer
- The use of computer aided programmes for careers information

When considering how option choices will influence career destinations, please refer to <https://careerswales.gov.wales/job-information>

Relationships and Sexuality Education (RSE)

Students follow a programme which aims to encourage them to make informed and responsible decisions about their attitudes and behaviour towards a number of issues including:

- sexual behaviour including contraception + STI's
- peer pressure
- relationships and respect for others